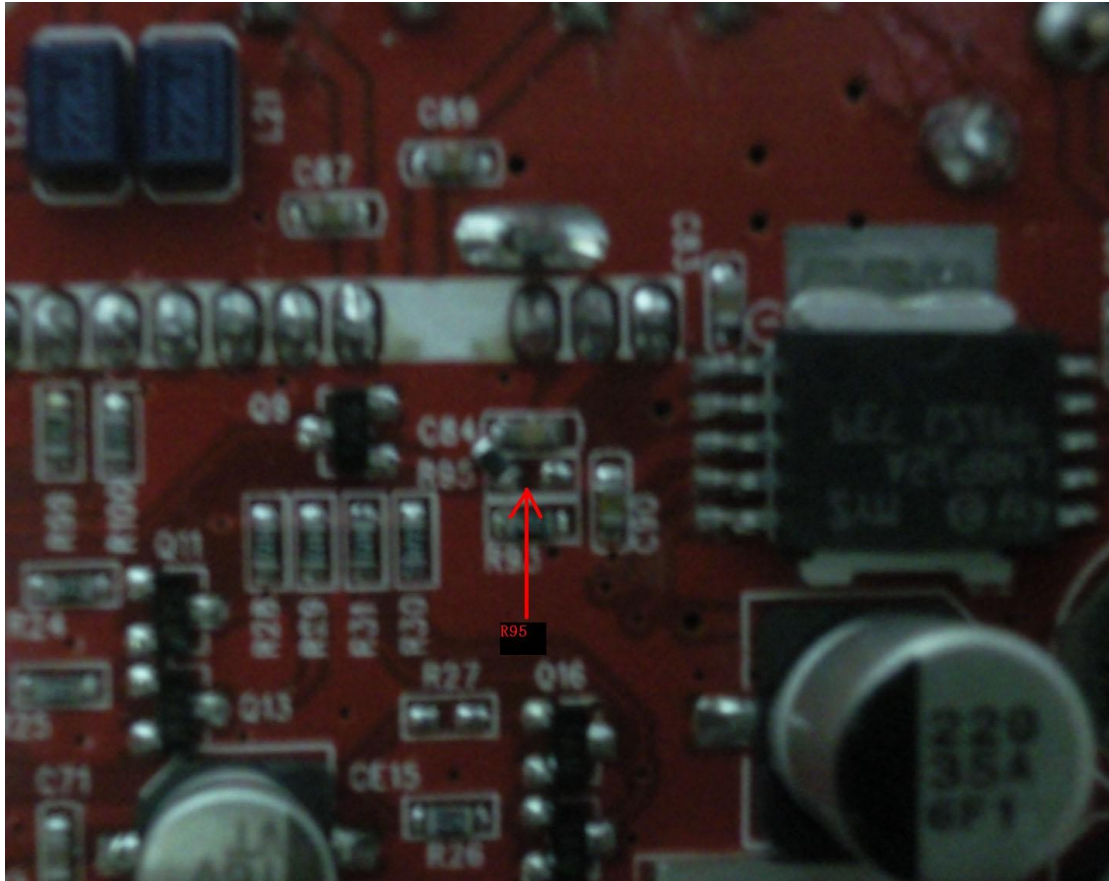


整机修理 How to repair

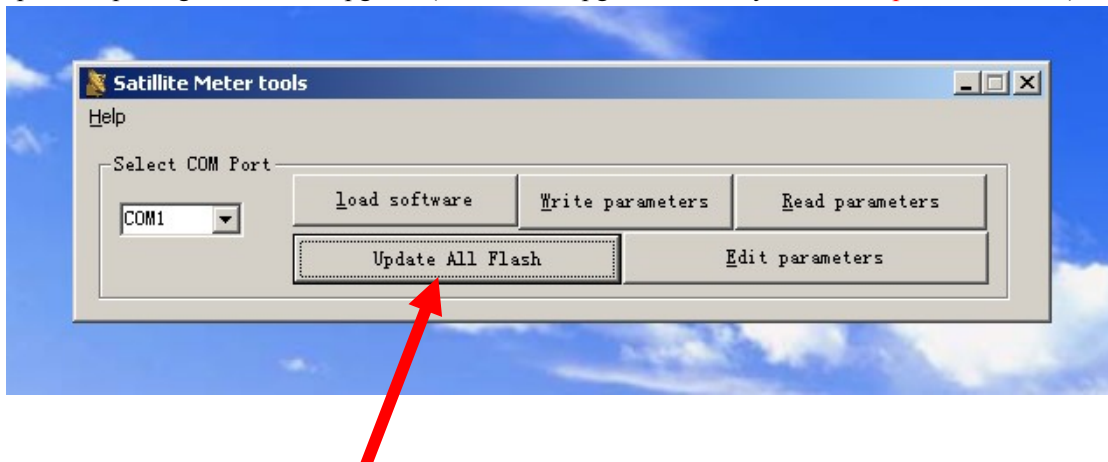
- 一) 故障现象：开机后只有 power 与 13V LED 灯亮，无视频输出(如附件中视频)
- 一) Problem: turn on the meter, only POWER and 13V LED lights on. (see the video of attachment)

修理步骤：how to repair

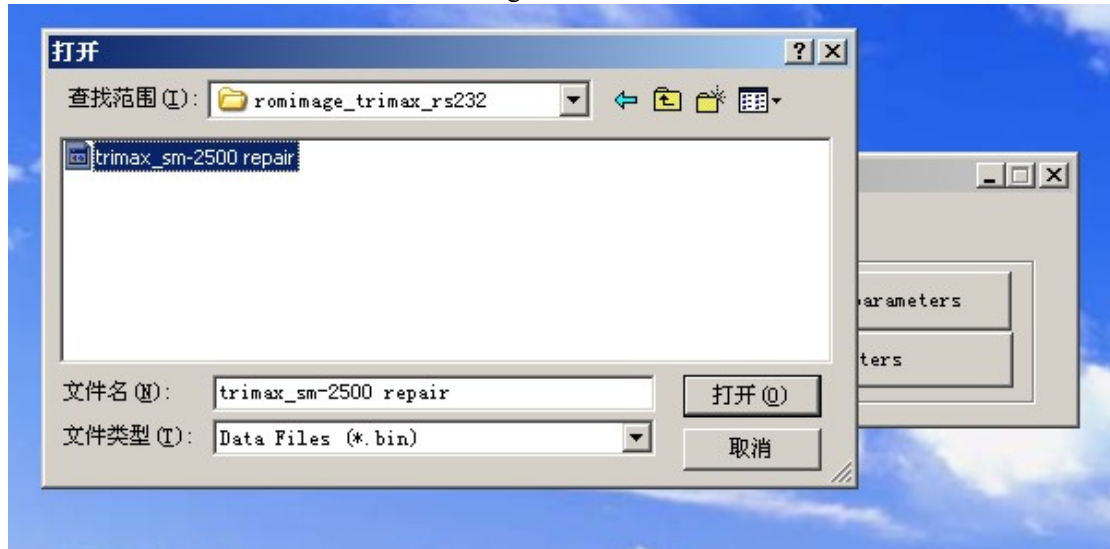
1. 打开机器外壳，取下电池后把主板上 R95 位号的电阻移开,如图 open the case of meter, take the battery out , and remove the resistor of R95 on mainboard



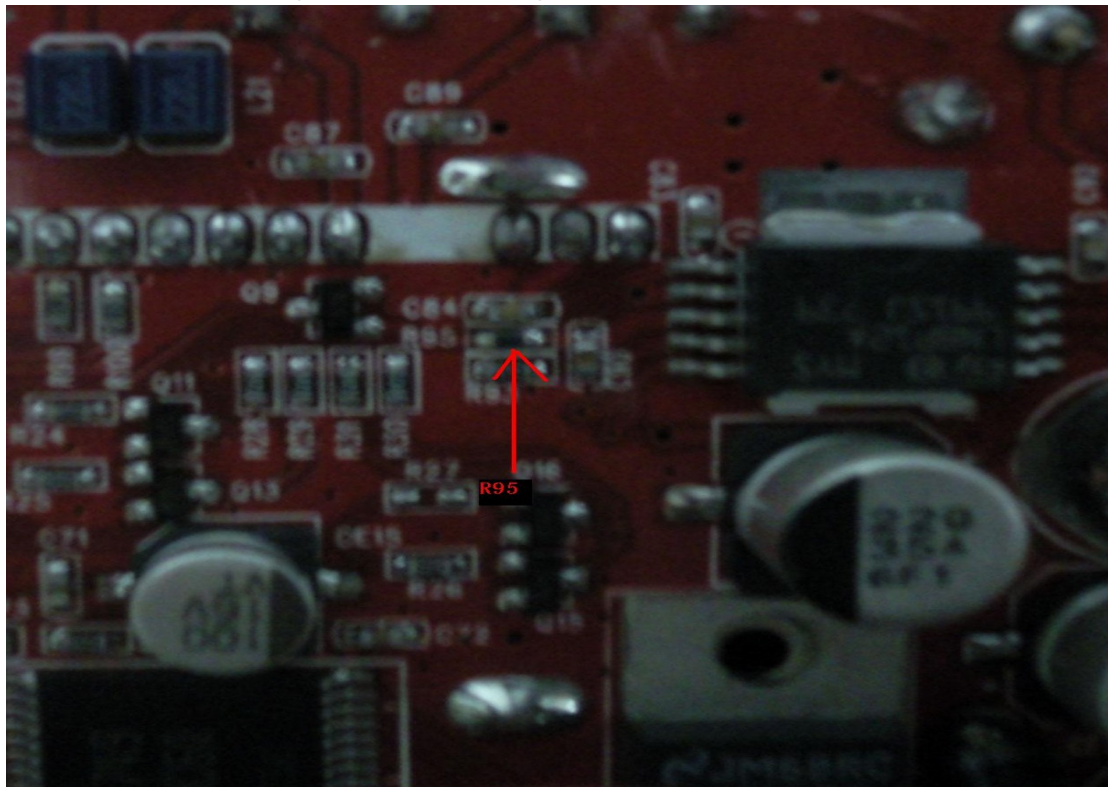
2. 接上电池后开机，机器能正常启动，并有视频输出。Put the battery back, and meter can boot, it has video output
3. 用专用的修复工具与软件进行升级(注：升级时只能选择 “Update all Flash”选项)use the special repairing software to upgrade (note: when upgrade, can only choose “Update all Flash”)



4. 选择修复软件，并确认。Choose the right software



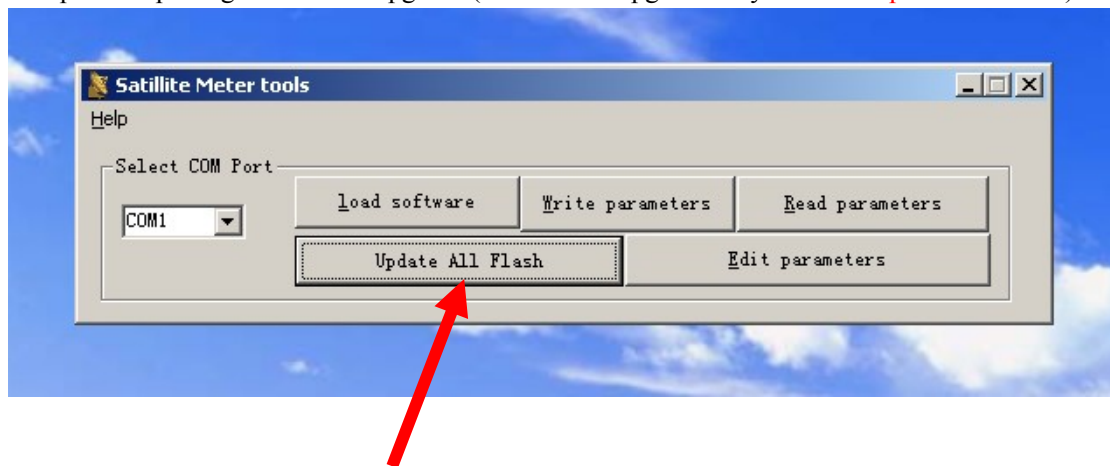
5. 按 POWER 键开机，机器开始升级，完成后机器会自动重启 press POWER key to turn on the meter, the meter will upgrade , when the upgrade is done, meter will reboot by itself automatically
6. 取下电池并把主板上 R95 位的电阻焊接到原来位置, 如图 take the battery out again, solder the resistor of R95 back again, see the following:



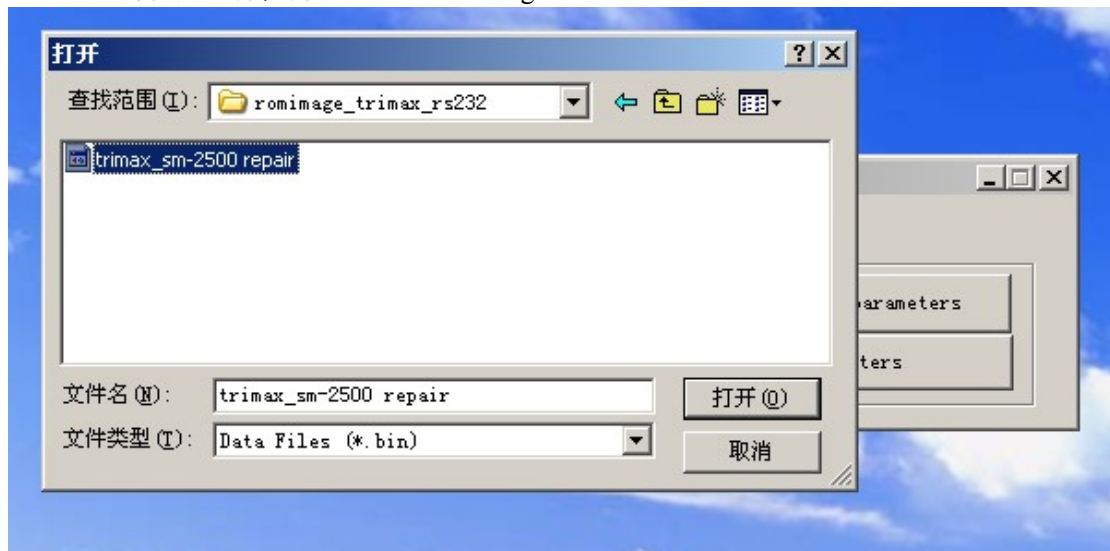
7. 装上电池，开机测试所有功能是否正常 put the batter back , turn the meter on to see if it works well.

二) 故障现象：能正常开机，但开机后屏上没有 OSD 显示，只有 POWER 灯亮 problem: can turn on the meter, but no OSD showing, only POWER light on

1. 用专用的修复工具与软件进行升级(注：升级时只能选择 “Update all Flash”选项)use the special repairing software to upgrade (Note: when upgrade only choose” Update all Flash”)



2. 选择修复软件，并确认 choose the right software



3. 按 POWER 键开机，机器开始升级，完成后机器会自动重启 press POWER key to turn on the meter , the meter will upgrade , when the upgrade is done, meter will reboot by itself automatically

4. 开机测试所有功能是否正常 turn the meter on to see if it works well.